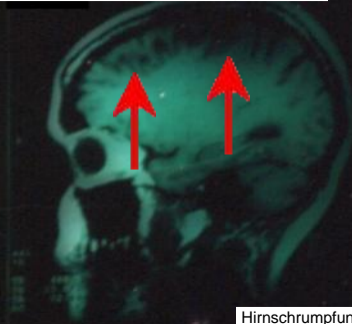
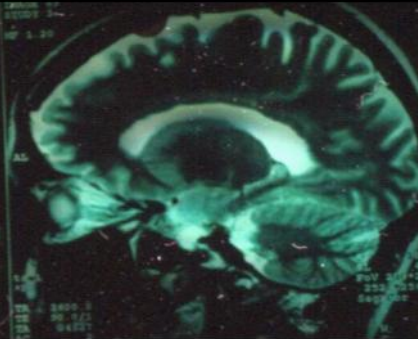
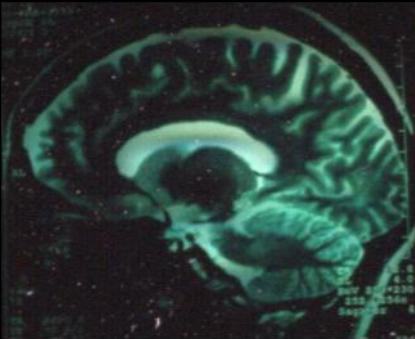
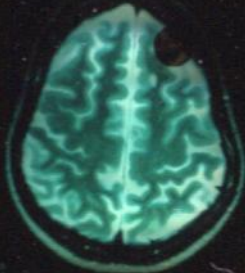


Alzheimer durch Amalgam in Zahnfächern, Kiefer und Grosshirn: toxische Multiple Sklerose

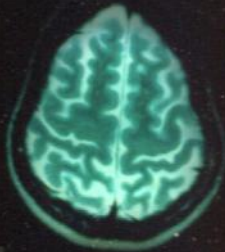


Hirnschrumpfung





SP -50.4  
SL 5.0  
Fov 230x230  
270 1234cm  
Tech-Cor -4



SP -50.4  
SL 5.0  
Fov 230x230  
270 1234cm  
Tech-Cor -4